



Immanuel
Lutheran
College

EXPAND YOUR WORLD

with us

Strategic Vision

Introduction

At Immanuel Lutheran College, we believe in shaping a future where every learner is inspired to ignite limitless possibilities. **Our Strategic Vision: Expand Your World with Us**—outlines a bold roadmap for preparing students not just to succeed in a changing world, but to lead it with purpose, creativity and confidence.



Our Vision

Immanuel Lutheran College is a school where **adventurous** and **inspiring learning ignites limitless possibilities**.



Our Mission

At Immanuel Lutheran College, we **spark courage** through **meaningful connections** and **challenges, never settling for can't**.

Our Motto

Walk as Children of the Light.



Our Values



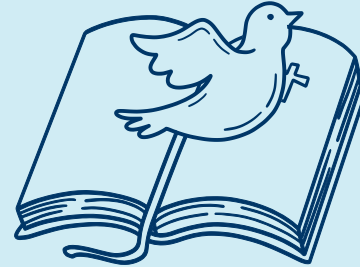
COMPASSIONATE HEARTS

Action, not just words. Our students tackle community needs, champion justice, and prove that true leadership begins with empathy.



CURIOUS MINDS

Relentless questioning, daring exploration. We build intellectual courage – students who test assumptions, challenge norms, and create solutions to complex problems.



GOD'S GRACE

Faith in motion. Our Christ-centred foundation drives students to live with purpose, lead with integrity, and serve with conviction in an increasingly complex world.



Our Philosophy

We are **mindfully present, forward-thinking** and **future-ready!**

The 3 Pillars of Our Future

At Immanuel Lutheran College our students are not just prepared for the future but actively shaping it. Our college believes that....



CONNECTION

We learn best together—connected to knowledge, to each other, to community, and to God.

Students build powerful connections with mentors who challenge them, peers who drive them, and community partners who expand their thinking. At Immanuel, every student is known, valued, and truly seen.

At Immanuel, friendships aren't just for the school years, they're the start of lasting networks. We balance real human connection with smart use of technology, helping students grow the emotional intelligence they'll need to lead with heart.

We're equipping students for lasting impact in both local and global communities, where they'll be the light of the world through authentic relationships grounded in faith and purpose.

PURPOSE

Education with purpose creates students with direction, focused on excellence, growth, and serving others. In a world of constant disruption, we develop purpose-driven innovators. Our students don't just anticipate change—they create it, with ethical frameworks that ensure technological advancement serves humanity.

Through hands-on entrepreneurship, environmental leadership, and community action, students discover how their God-given talents meet the world's pressing needs.

We reject education that prepares students for yesterday's challenges. Instead, we shape adaptable minds ready to tackle emerging global issues with courage, creativity, and conviction.

LEARNING

Lifelong learning outlasts classrooms. We're creating students who question boldly, explore constantly, and discover purposefully.

At Immanuel, learning is active, challenging, and real. Our students solve authentic problems, design viable solutions, and implement measurable change, both inside and outside the classroom.

We are reimagining assessment. Our students demonstrate mastery through portfolios, real-world projects, and genuine impact in their communities.

Our approach combines deep academics with practical innovation. Students graduate not just knowing but doing—equipped with the agility to thrive in an unpredictable future.

CONNECTION

Faith and Global Community Engagement

Break geographic boundaries—connecting students with faith-driven leaders and communities worldwide who challenge them to act with purpose. We're not just networking; we're building a global force for positive change.

Wellbeing and Human Flourishing

Revolutionise student wellbeing—blending cutting-edge neuroscience with faith-based wisdom to build unshakeable resilience. We don't just manage stress; we develop emotionally intelligent leaders ready for anything.

Smart and Immersive Collaborative Learning

Transform learning through bold technology—not as a distraction, but as a catalyst for collaboration across continents. Students don't just study global problems; they solve them with peers worldwide.

Sustainable and Ethical Leadership

Lead the sustainability revolution—through radical campus transformation as a model green school. Our students don't just learn about environmental stewardship; they live it and lead others to do the same.



PURPOSE

Faith and Values in Action

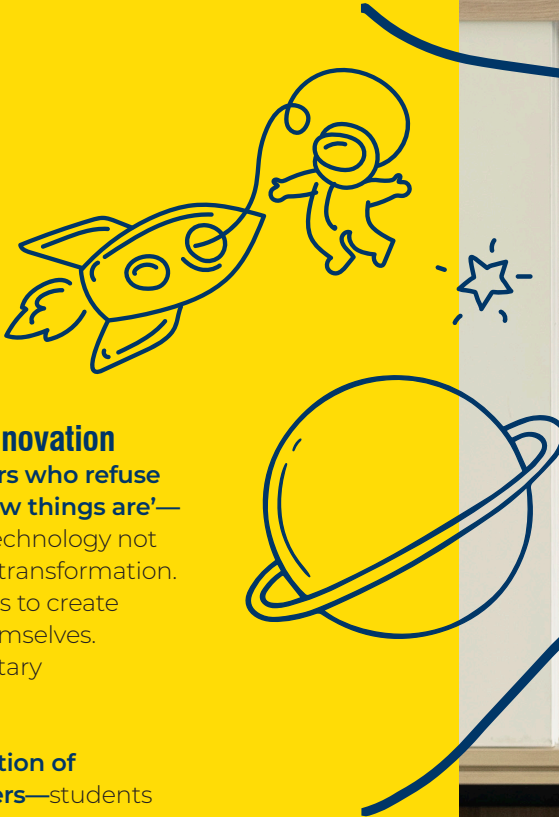
Forge ethical leaders with **uncompromising conviction**—who stand firm in a world of shifting values. We don't teach students what to think; we empower them to lead with faith-driven clarity in complex situations. Careers of the Future & Industry Integration

Prepare for careers that don't exist yet—through fearless entrepreneurship programs and real-world industry challenges. We don't follow workplace trends; we anticipate them and position students to lead them.

Service and Social Innovation

Unleash problem-solvers who **refuse to accept 'that's just how things are'**—students who harness technology not for convenience, but for transformation. They don't wait for others to create change; they drive it themselves. Sustainability and Planetary Responsibility

Create the next generation of environmental defenders—students who tackle climate challenges with bold innovation, not passive concern. They don't just recycle; they redesign systems for regenerative impact.



LEARNING

Augmented Learning

Embrace curiosity as the catalyst—

where questions spark discovery and failure fuels innovation. Students don't memorise answers; they create solutions. Embracing a dynamic environment where questions drive discovery and failure becomes a launchpad for innovation. Students don't memorise answers; they create solutions.

Faith-Integrated Education

Bridge faith and contemporary challenges—where Biblical wisdom isn't relegated to chapel but actively shapes responses to today's most pressing issues. We're developing leaders who bring God's perspective to a world seeking direction.

Future Proofing Skills and Adaptability

Build intellectual athletes—students with the mental agility to pivot, adapt, and thrive in rapidly changing scenarios. They don't fear technological disruption; they leverage it to create positive change.

Sustainable Smart Learning Environments

Design learning spaces that break through traditional constraints—environments that adapt to students, not the other way around. We're breaking down walls between subjects, between indoor and outdoor, between school and the real world.



Strategic Framework

STRATEGIC INITIATIVES	KEY PROGRAMS	FUTURE-FOCUSED ACTIONS	INNOVATION PATHWAYS	IMPACT PROJECTS
High-level, long-term actions designed to achieve the vision and focus areas.	Specific programs or projects that implement the strategy in practical ways.	Targeted, forward-thinking steps that align with the school's future-ready direction.	Cutting-edge initiatives that explore new methods, technologies, and global best practices.	Hands-on, student-led initiatives that contribute to real-world change in faith, sustainability, or innovation.
Investigate distinctive, innovative learning models that support diverse learner aspirations *	Future-Ready Student Uniform Review – student-centred, sustainable uniform redesign	Implement Master Plan - Stage 1*	Create a Circular Economy and Zero Waste Program	Reconciliation Action Plan – including embedding authentic Indigenous perspectives in all decision-making
Faith and Community Engagement – expand Global Faith & Leadership networks, strengthen international faith-driven partnerships and real-world service projects.	Master Plan Update – focus on smart and sustainable campus development	Implement Master Plan - Stage 2 *	Progress the development of a distinctive and innovative academic pathway, aligned with our mission, vision and values *	Net Zero School Initiative – implement green infrastructure, smart grids, and energy storage solutions.
Biodiversity & Regenerative Agricultural Program – transform Mt Binga into a living sustainability lab.	College Structures Review – leadership, operational models and systems	Student Startup & Social Enterprise Hub – establish a space where students create tech-driven social impact businesses.	AI Powered Adaptive Learning Pathways - Smart Campus & Learning Analytics – real-time student learning dashboards that track and personalise progress.	Global Innovation Challenges including hosting a Global Ethical Leadership Summit led by students

Proposed Commencement Dates.
*Subject to required approvals, legislation and project outcomes.

2025	2026	2027	2028	2029
------	------	------	------	------





Immanuel
Lutheran
College

EXPAND YOUR WORLD

with us

immanuel.qld.edu.au

